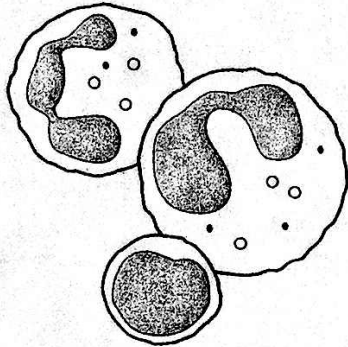


**Directions:** Fill in the missing words in the following statements to describe the four functions of blood.

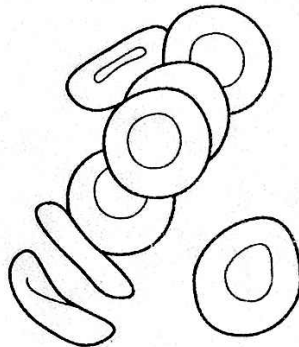
1. carries \_\_\_\_\_ to all body cells and removes \_\_\_\_\_
2. carries \_\_\_\_\_ of cell activity to \_\_\_\_\_ to be removed
3. transports \_\_\_\_\_ from the digestive system to all cells
4. carries materials that fight \_\_\_\_\_ and heal wounds

**Directions:** The parts of human blood are shown below. Use the following phrases to write what each part does on the line below its picture: **help clot blood; transport oxygen; contains nutrients and minerals; help fight infection.**

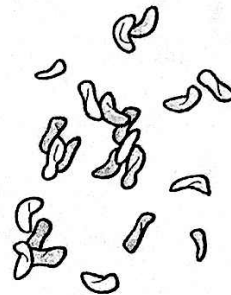
**A. White blood cells**



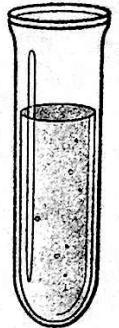
**B. Red blood cells**



**C. Platelets**



**D. Plasma**



5. a. \_\_\_\_\_ c. \_\_\_\_\_
- b. \_\_\_\_\_ d. \_\_\_\_\_

**Directions:** Complete the following table. Possible blood types of the donor are listed horizontally. The possible blood types of the receiver are listed vertically. Make a check in the box if the receiver can receive blood from the donor directly above. Then answer the questions below the table.

		Donor (can give blood to)			
		Blood type	O	A	B
Receiver (can receive blood from)	6. O				
	7. A				
	8. B				
	9. AB				

10. Who can receive any blood type? \_\_\_\_\_

11. Who can receive only O type blood? \_\_\_\_\_